

These Are The People In The Courtroom.

You can put these stickers on the courtroom drawing on pages 12-13.



Child Protective
Services (CPS)



Child Protective
Services Lawyers



Respondent



Judge



Attorney or Assigned Counsel



Attorney for Child
(AFC)



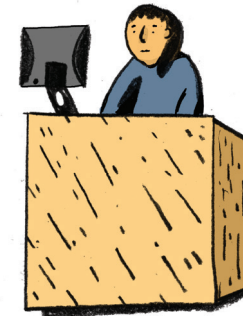
Guardian Ad Litem
(GAL)



Court-Appointed
Special Advocate
(CASA)



Court Attorney



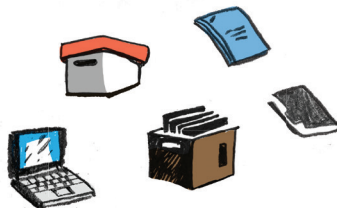
Court Clerk or
Court Assistant



Court Officer



Social Worker



Family/Victim Advocate



Court Reporter



Interpreter